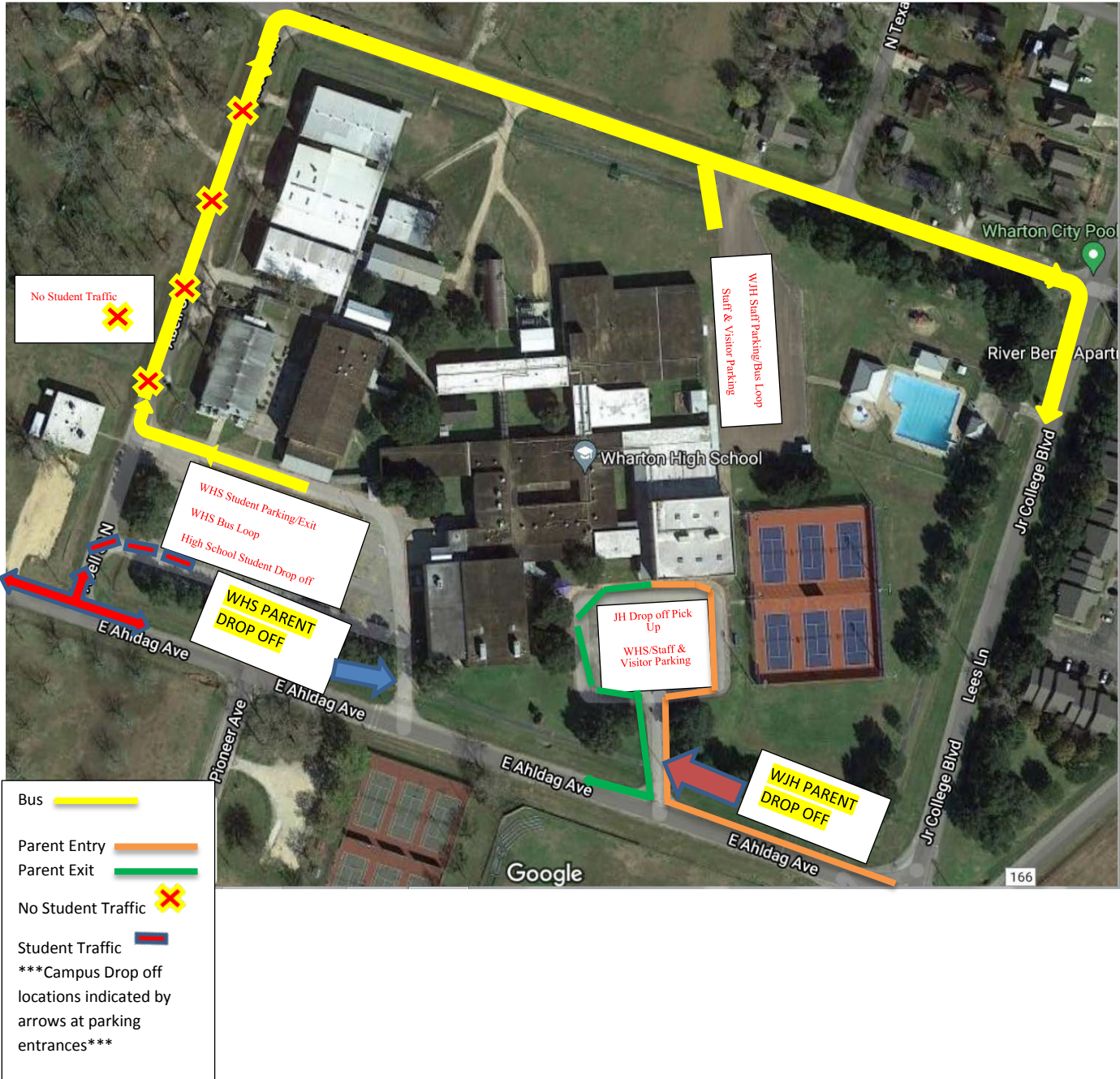


WHS and WJH Traffic Plan



Bus	
Parent Entry	
Parent Exit	
No Student Traffic	
Student Traffic	
Campus Drop off locations indicated by arrows at parking entrances	

Parents and Community Members, please be advised of the traffic changes this year regarding traffic patterns as the Wharton High School and Wharton Junior High School merge onto one campus. With the expected increase of traffic in the area, WISD Police Officers will be on duty to relieve traffic congestion, improve traffic flow, and the overall experience of you, the parents, and our community members alike. The most notable changes to the High School Campus are as follows: (See Map)

WHARTON HIGH SCHOOL

- WHS visitor parking and staff parking will be located in the New Gym Parking Lot (Main Entrance Remains the Same)
- **WHS Student Parking and Bus Drop off will be located in the Old Gym Parking Lot**

There will be no thru traffic on Abell St. in front of the field house. All vehicles parked in the Old Gym Parking Lot will exit to the left and enter Ahldagh St (1 Tiger Ave)

WHARTON JUNIOR HIGH

- WJH Student **Drop off** and **Pick Up** will be located in the **New Gym Parking Lot** (New Gym Walkway)
 - Traffic will enter from Jr. College BLVD turning right to enter the parking lot
 - Traffic will Exit the parking lot by turning right onto Ahldagh St.
- WJH visitor and staff parking will be located in the rear parking lot next to the **City Pool** (Follow signs for WJH main entrance for front offices)

Wharton Junior High Parents at 0800 hrs the drop off gate will be secured and your student will need to report to the rear of the campus near the pool to check in

Changes to the traffic patter may vary to relieve congestion and improve traffic flow by Wharton ISD Police Officer(s) on duty.